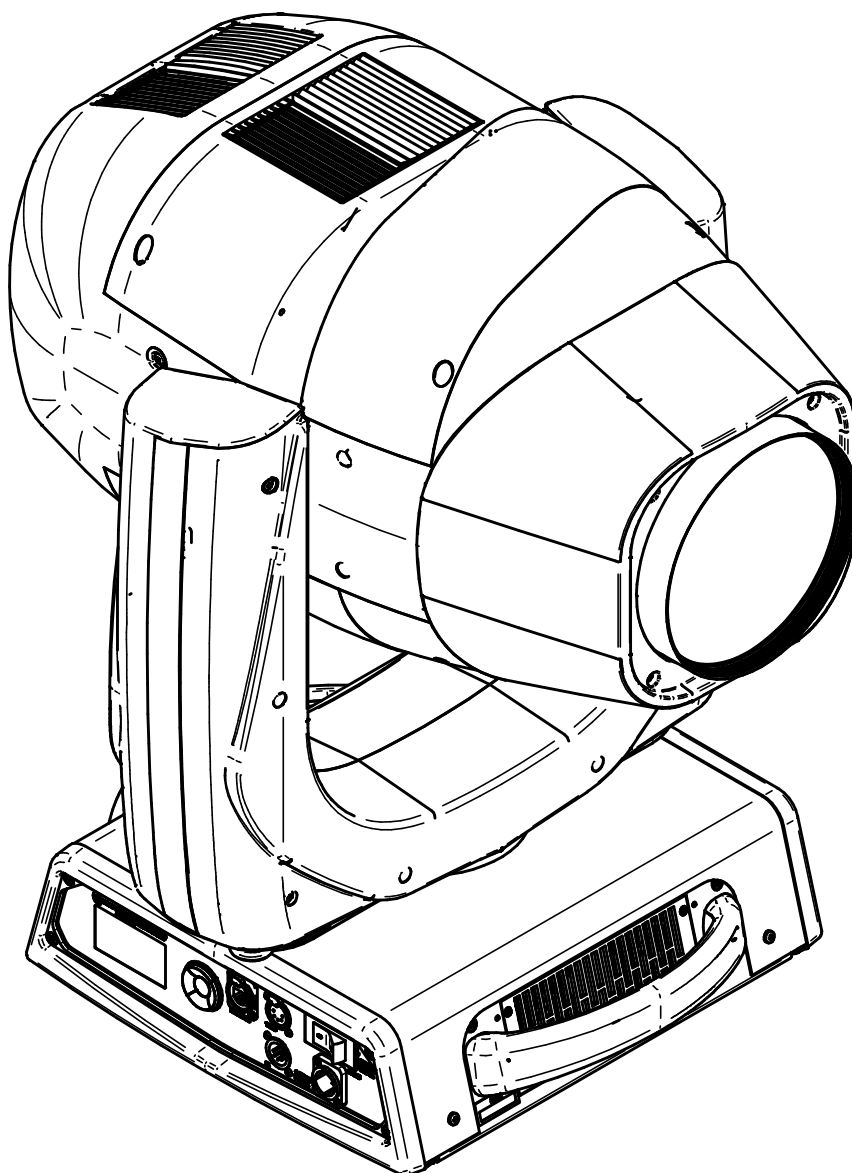


SPARE PARTS

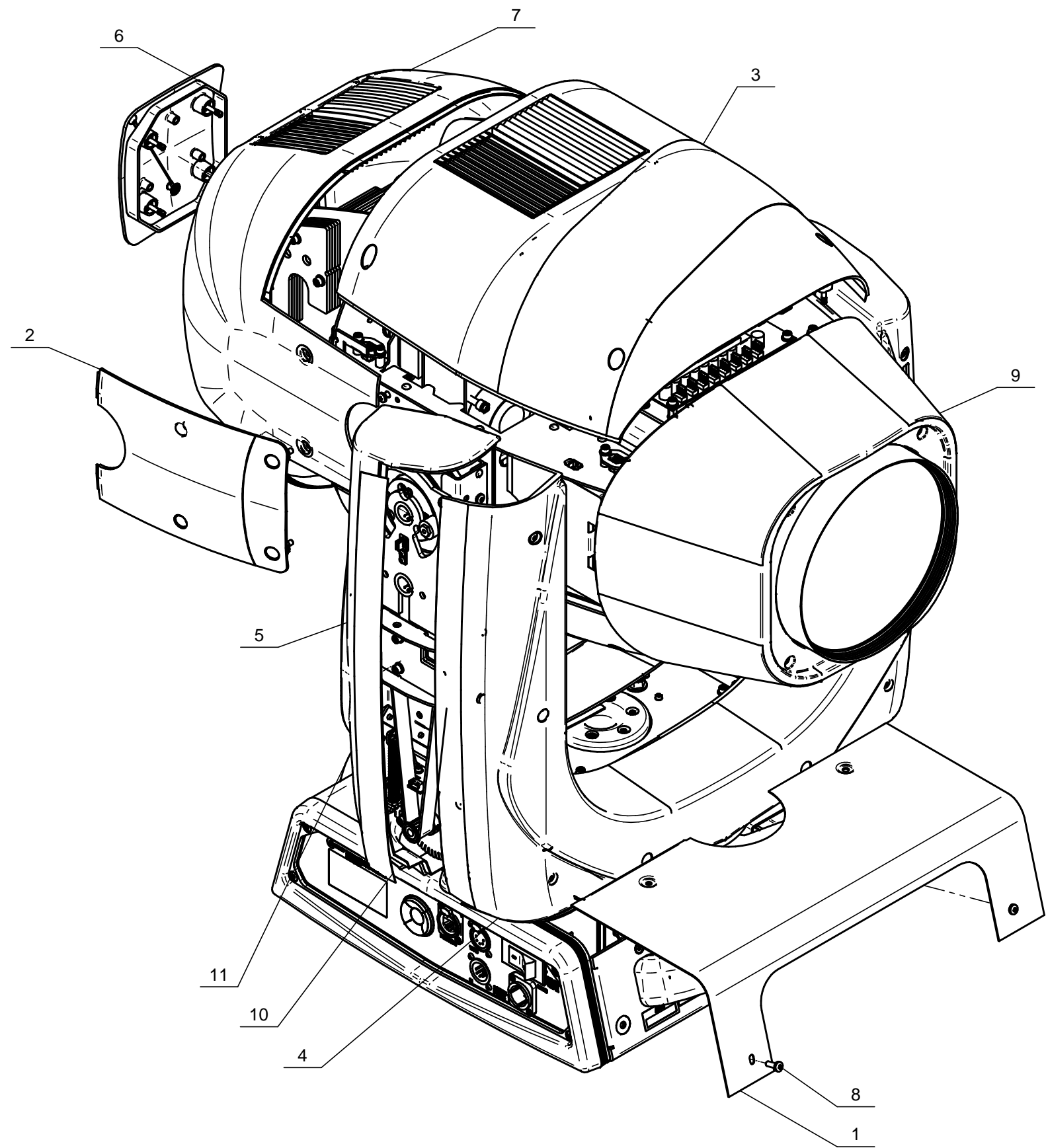


INDEX

Case	2
Base assembly (part1)	3
Base assembly (part2)	4
Base assembly (part3)	5
Control Panel assembly	6
Yoke assembly	7
Head/Lamp Reflector assembly	8
Colour Mixing assembly	9
Effects assembly	10
Iris/Profiler assembly	11
Optical assembly	12

SCENIUS UNICO

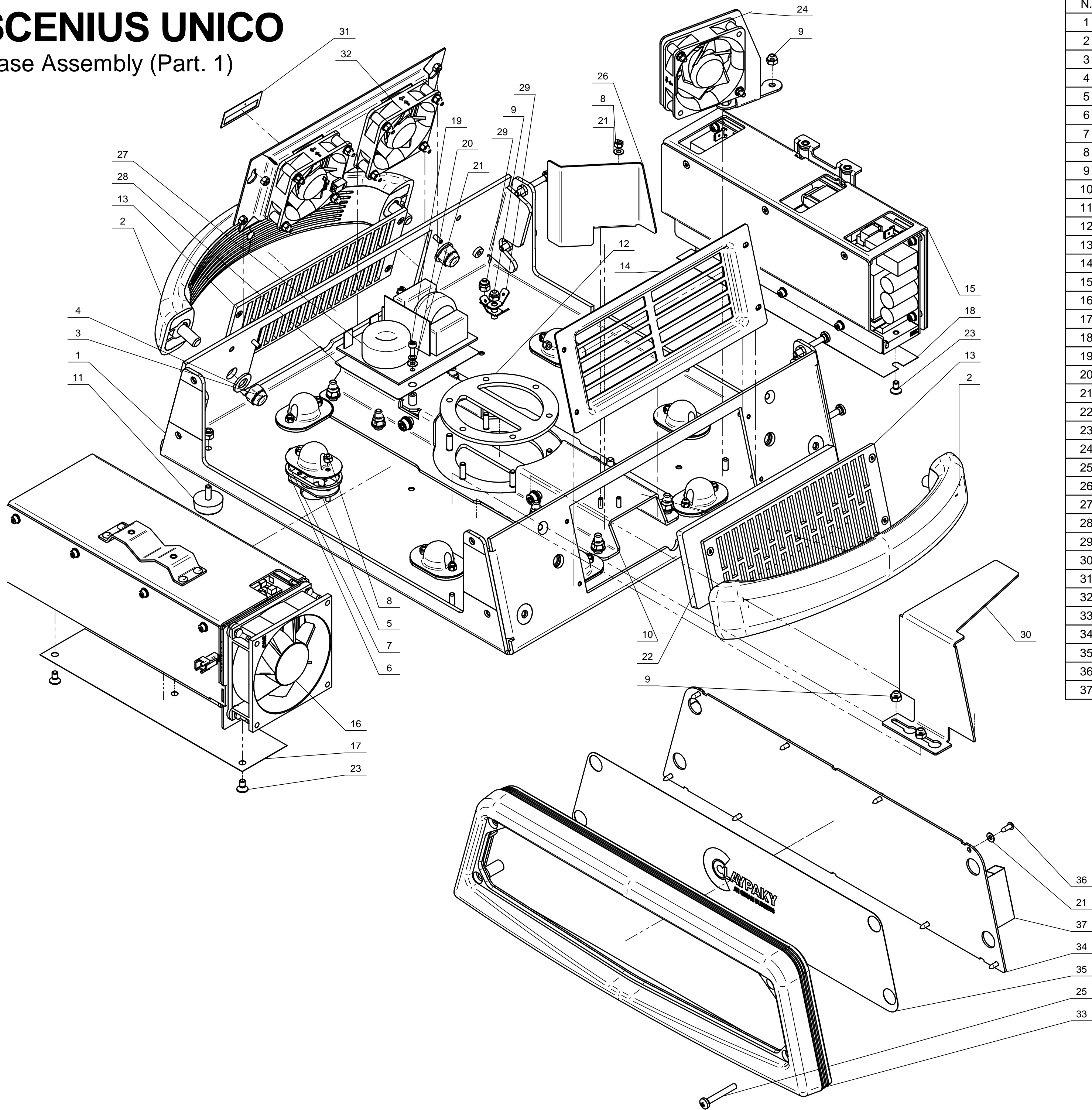
Case



N.	Part Number	Description
1	283169-801	Base Carter
2	285016-801	Lateral Cover Group SCENIUS
3	283015-803	Effects Cover Group SCENIUS
4	285014-802	With Drain Lever Yoke Group SCENIUS
5	285014-801	Yoke Group SCENIUS
6	285021-801	Changing Lamp Cover Group SCENIUS
7	283014-801	Back Cover Group SCENIUS
8	020004-025	Screw TCIC M4x12 UNI 7687 - Black Zinc Coated
9	322019-801	Front Flange Group SCENIUS UNICO
10	ETI06B-001	SCENIUS UNICO Label
11	283000-805	Base with Yoke Group SCENIUS UNICO

SCENIUS UNICO

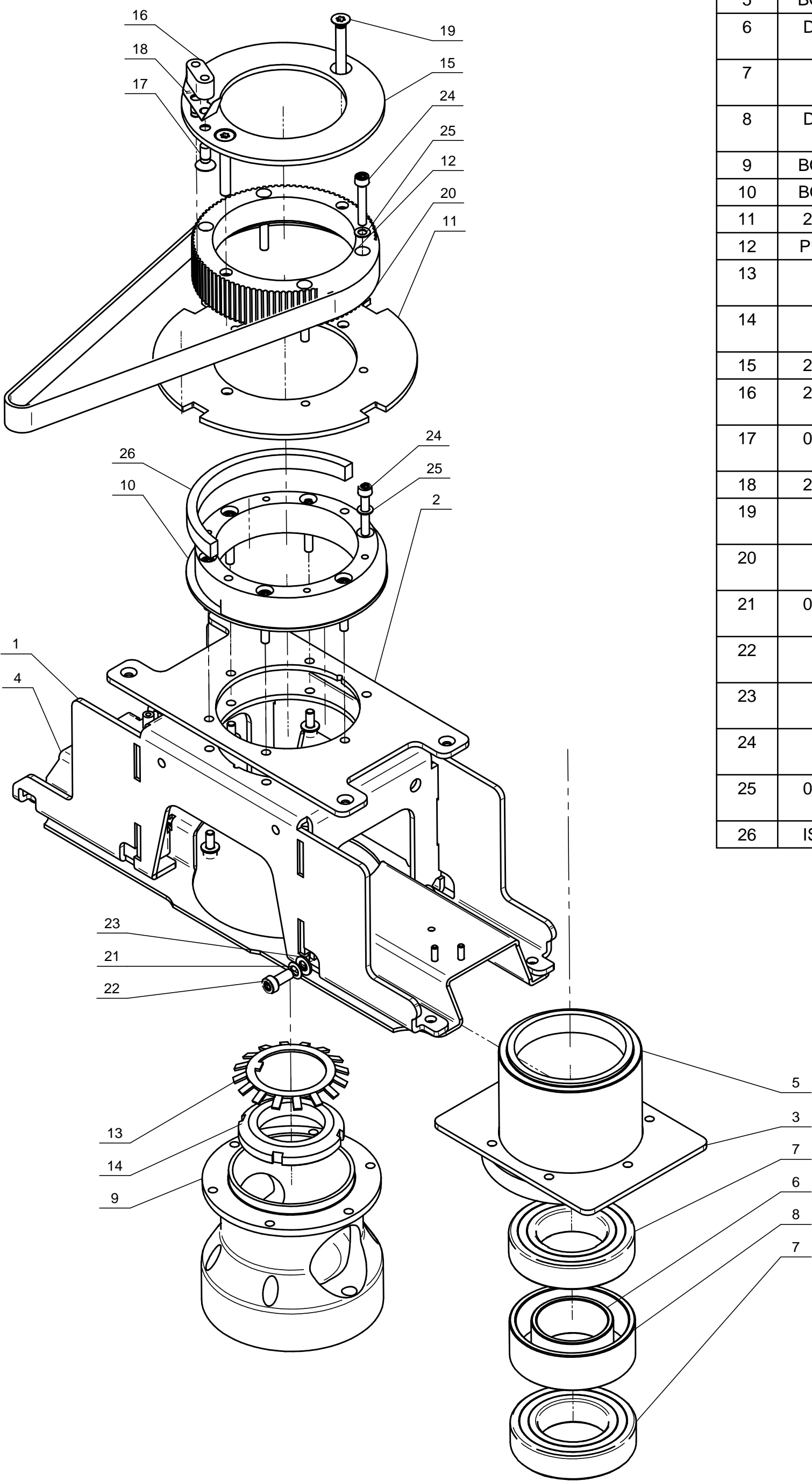
Base Assembly (Part. 1)



N.	Part Number	Description
1	283574-801	Base Plate
2	299200-801	Hanlde Group
3	020101-005	Self Locking Nut M8 UNI 7473 - White Zinc Coated - Nylon Insert
4	ROP008	Washer ø8.4 UNI 6592 - Black Zinc Coated
5	020412-001	Receptacle 991R2-1 AGV
6	088003-001	Receptacle Gasket 991R2-1AF
7	183133-002	Receptacle protection
8	020101-001	Self Locking Nut M3 UNI 7473 - White Zinc Coated - Nylon Insert
9	020101-010	Self Locking Nut M4 UNI 7473 - AISI - Nylon Insert
10	283502-801	PAN Rotation Hub Group
11	ANV003-001	Feet
12	283075-001	Safety Plate
13	283231-801	Ventilation Grid
14	283228-001	Ventilation Grid
15	283220-801	Power Supply Closure Plate Group
16	283321-801	Lamp Power Supply Group
17	264101-001	Thermal Pad
18	264102-001	Thermal Pad
19	VTC01E	Screw TCCE M3x08 UNI EN ISO 14579 - White Zinc Coated
20	020201-002	Safety Washer ø3.2 Schnorr BN 791 Black Zinc Coated
21	020210-005	Washer ø3.2 UNI 6592 - White Zinc Coated
22	283132-001	Ventilation Filter
23	VTS00D-001	Screw TSCE M4x8 UNI EN ISO 14584 - Black Zinc Coated
24	283010-801	Base Fan Group
25	020004-034	Screw TCIC M4x30 UNI 7687 - Black Zinc Coated
26	283060-001	Air-Duct Plate
27	031877	Filter 13A (32 313 1010)
28	283111-002	Mylar Protection for Filter
29	030122	Faston Type B 6,3 x 0,8 45°
30	283327-801	Air-Duct Group
31	ETI05G-001	Serial Number Label
32	285151-801	Base Fan Group
33	PLA01G-801	Group Panel Rear
34	283324-001	Plate
35	ETI06R-001	SCENIUS UNICO Clay Paky Label
36	020031-001	Screw AftBIC Ø2.9x9.5 ISO 7049 - White Zinc Coated
37	ISO002-001	Insulating DRE10x20NI-N5V0-40

SCENIUS UNICO

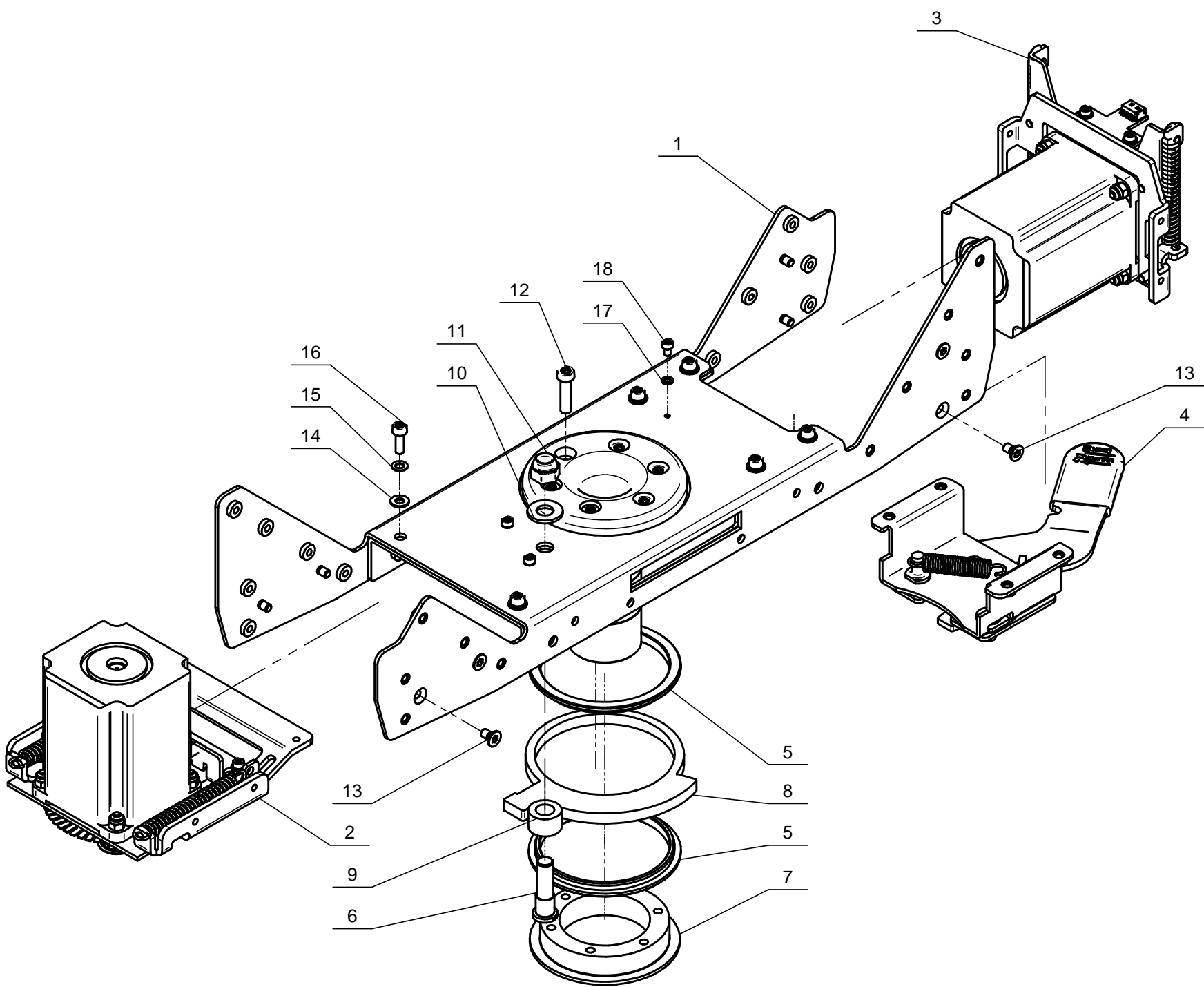
Base Assembly (Part. 2)



N.	Part Number	Description
1	283553-001	support Hub
2	283097-002	Reinforcing Plate
3	283097-001	Reinforcing Plate
4	283552-801	Base Fixing plate
5	BOC00U-001	Bearing Bush
6	DIS017-001	Cylindrical Spacer Ø40 ø35 H=21
7	021016	Ball Bearing ø35Ø62x14 - 6007-ZZ
8	DIS018-001	Cylindrical Spacer Ø62 ø55.5 H=21
9	BOC01P-001	Bush
10	BOC00X-001	Bush
11	283058-001	Block disc Pan
12	PUD018-001	Toothed Pulley Z96 HTD
13	020218	Lock Washer MB 07 White Zinc Coated
14	020131	Lock Ferrule KM 07 M35x1.5 Phosphated
15	232121-001	Locking Fixing Plate PAN
16	232122-001	PAN Stopping Rotation Worked Block
17	020005-010	Screw TSPEI M5x12 UNI 5933 - Black Zinc Coated
18	232123-001	Compression Spring PAN
19	VTS013	Screw TSCE M5 x 35 UNI EN ISO 14584 - Black Zinc Coated
20	CID01D	Toothed Belt HTD 0537-3M-15 (Aramid Fiber)
21	020201-009	Safety Washer ø5.1 Schnorr BN 791 Black Zinc Coated
22	VTC01M	Screw TCCE M5x12 UNI EN ISO 14579 - Black Zinc Coated
23	ROP006	Washer ø5.3 UNI 6592 - Black Zinc Coated
24	VTC00T	Screw TCCE M4x25 UNI EN ISO 14579 - Black Zinc Coated
25	020201-003	Safety Washer ø4.1 Schnorr BN 791 Black Zinc Coated
26	ISO001-004	Electric Conductive Sponge

SCENIUS UNICO

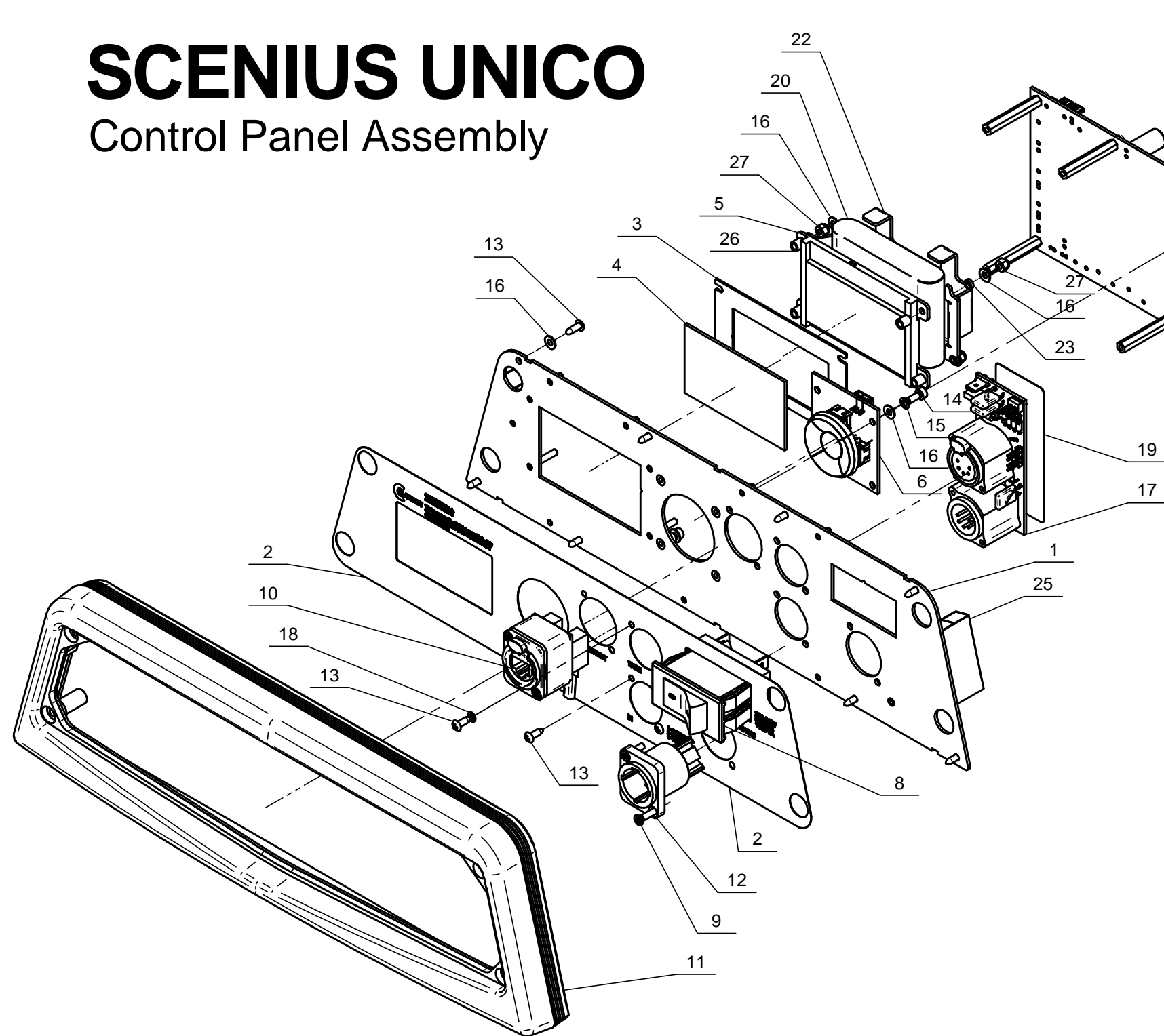
Base Assembly (Part. 3)



N.	Part Number	Description
1	283092-801	PAN Rotation Crossbeam
2	283103-801	PAN motor Group
3	283104-801	TILT motor Group
4	283005-801	TILT Block Group
5	082018-001	Spacer
6	080264-002	Threaded Stud M8
7	232094-001	Flange
8	232120-001	Locking Plate PAN
9	081044-004	Cylindrical End Stopper ø9xØ16x10
10	020210-003	Washer ø8.4 UNI 6592 - White Zinc Coated
11	020101-005	Self Locking Nut M8 UNI 7473 - White Zinc Coated - Nylon Insert
12	VTC01P-001	Screw TCCE M5x20 UNI EN ISO 14579 - Black Zinc Coated
13	VTS00D-001	Screw TSCE M4x8 UNI EN ISO 14584 - Black Zinc Coated
14	ROP005	Washer ø4.3 UNI 6592 - Black Zinc Coated
15	020201-003	Safety Washer ø4.1 Schnorr BN 791 Black Zinc Coated
16	VTC00O	Screw TCCE M4x12 UNI EN ISO 14579 - Black Zinc Coated
17	020201-002	Safety Washer ø3.2 Schnorr BN 791 Black Zinc Coated
18	VTC008	Screw TCCE M3x05 UNI EN ISO 14579 - Black Zinc Coated

SCENIUS UNICO

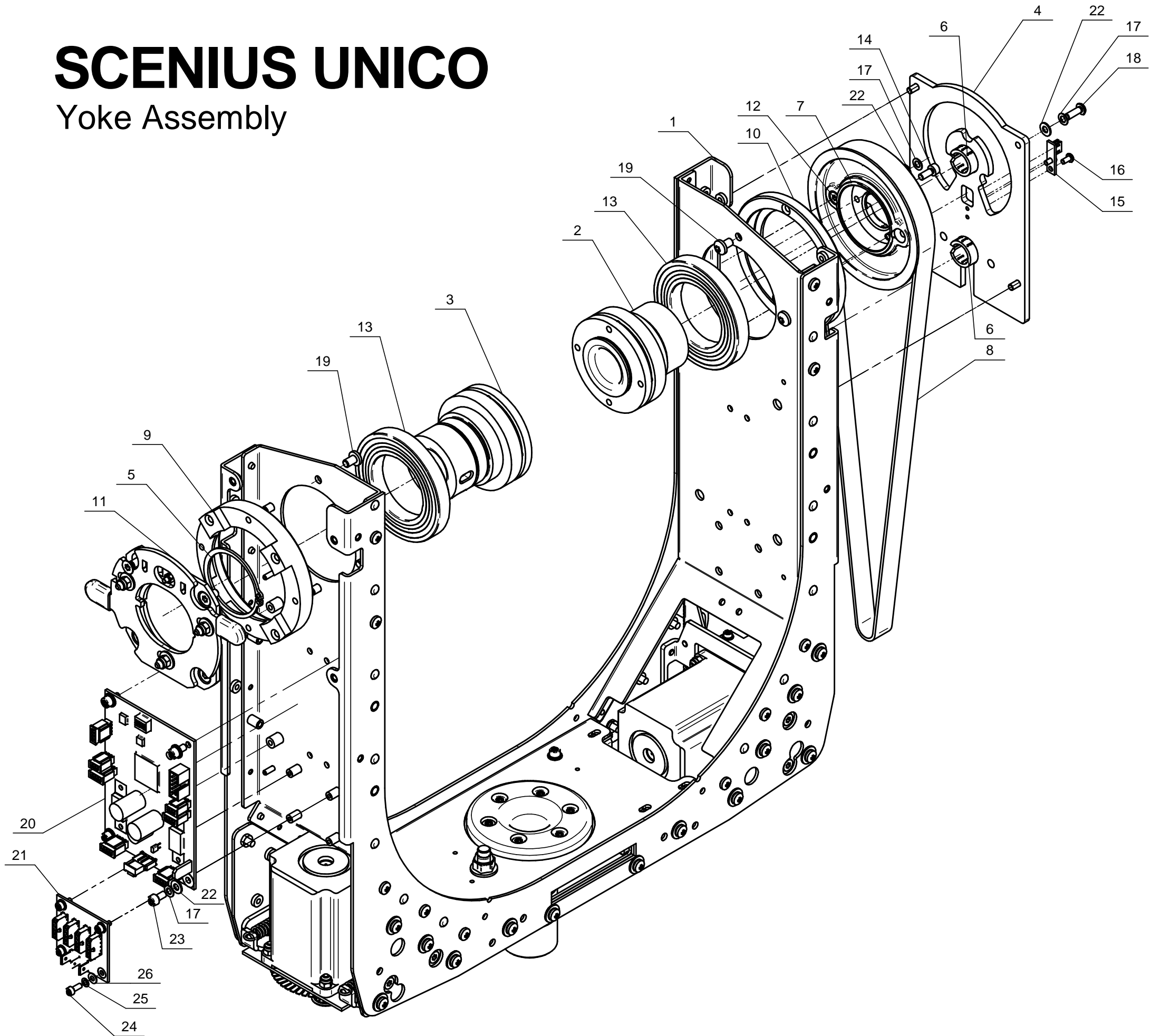
Control Panel Assembly



N.	Part Number	Description
1	283127-801	Electronic Fixing Plate
2	ETI06S-001	SCENIUS UNICO Control panel Label
3	237131-001	
4	232132-001	Display LCD Protection
5	DIP001-001	LCD Graphic Display - MGGF064D8B
6	SCH062	User MEC Electronic Board
7	699188	CPU Electronic Board
8	030346-001	Automatic Switch 3120-F521-H7T1-WO1D-12A
9	020007-001	Screw TSPIC M3x12 UNI 7688 - White Zinc Coated
10	CAB056-801	Ethernet wiring
11	PLA01G-801	Group Panel Rear
12	CON00N	Inlet Connector Powercon Neutrik (NAC3MPX)
13	020031-001	Screw AfTBIC Ø2.9x9.5 ISO 7049 - White Zinc Coated
14	VTC01E	Screw TCCE M3x08 UNI EN ISO 14579 - White Zinc Coated
15	020201-002	Safety Washer ø3.2 Schnorr BN 791 Black Zinc Coated
16	020210-005	Washer ø3.2 UNI 6592 - White Zinc Coated
17	SCH02B	DMX 5 Poles Connection Electronic Board
18	020217-008	Plastic washer ø2.7xØ5x0.5 Neutral
19	283111-001	Mylar Protection for DMX Connector
20	BAT008-801	Battery 48AA1500EHx5 6V Ni-MH
21	SCH061	Deviator Electronic Board RS232 CP 0119
22	283081-002	Battery Fixing Plate
23	080601-010	Cylindrical Spacer Ø 5 ø 3.2 H=1.5
24	021602-011	Hexagonal Spacer FF M3 H=35 - Nickel-Plated Brass
25	ISO002-001	Insulating DRE10x20NI-N5V0-40
26	080601-015	Cylindrical Spacer Ø 5 ø 3.2 H=5.5
27	020101-001	Self Locking Nut M3 UNI 7473 - White Zinc Coated - Nylon Insert

SCENIUS UNICO

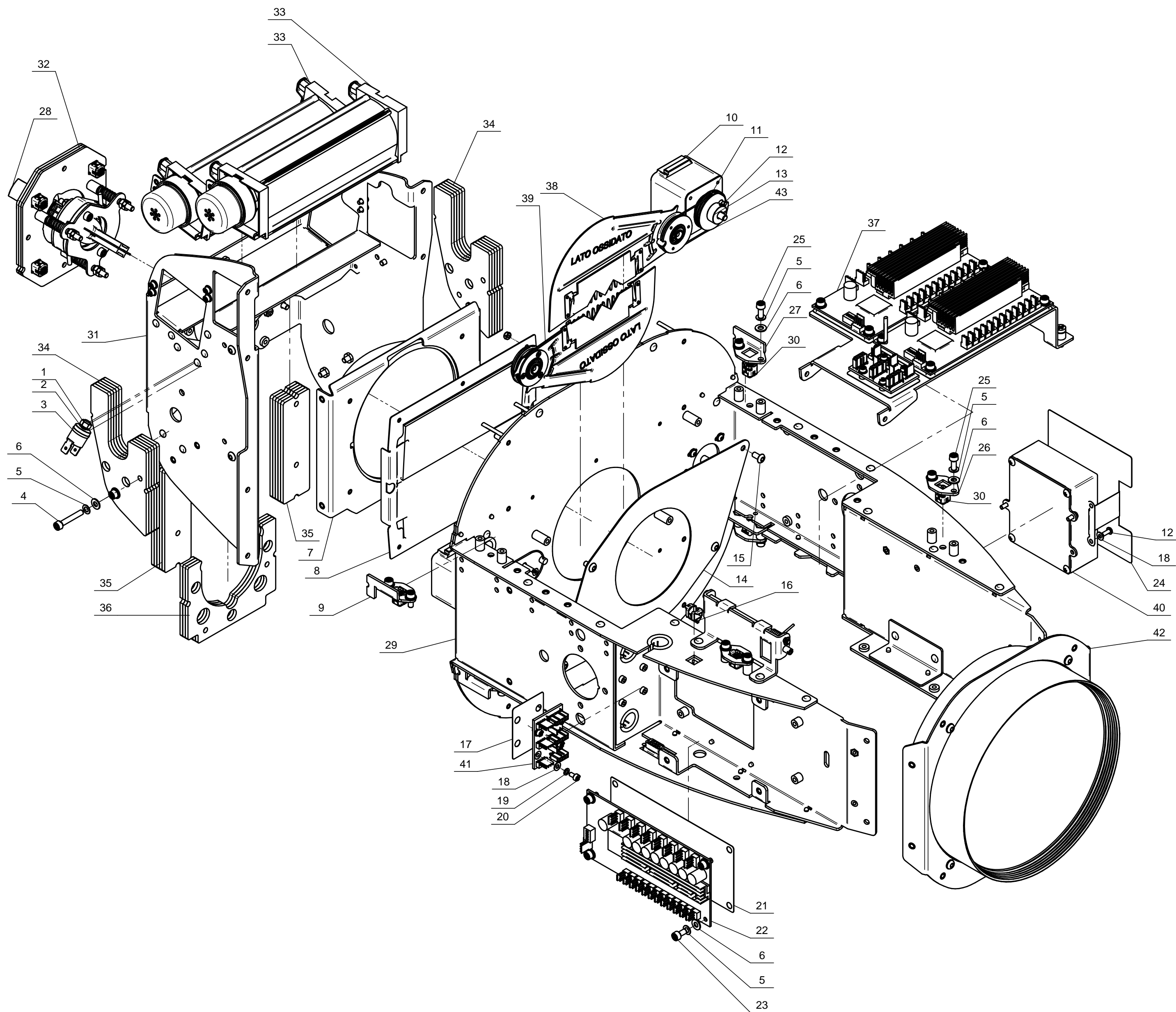
Yoke Assembly



N.	Part Number	Description
1	283007-801	Yoke Group
2	PER01I-001	Transmission Side Stud TILT
3	PER01J-001	TILT Side Stud
4	283161-801	Locking Plate
5	020625	Retaining Rings for Shaft C72 - UNI 7435 Burnished Ø45
6	030082	Cable Retainer ø20.2 - Heyco OCB-750
7	283100-801	Pulley Group With Magnet Z96 HTD
8	CID018	Toothed Belt HTD 0804-3M-15 (Aramid Fiber)
9	BOC00V-001	TILT Bearing Bush
10	BOC00W-001	Bearing Bush
11	283210-801	TILT Block Group
12	VTS00B-001	Screw TSCE M4x25 UNI EN ISO 14584 - Black Zinc Coated
13	CUS00C	Ball Bearing ø45xØ75x10 - 160009 2RS
14	VTC00N-001	Screw TCCE M4x10 UNI EN ISO 14579 - Black Zinc Coated
15	SCH02J	Sensore Hall Electronic Board
16	VTB005-001	Screw TBCE M3x06 UNI EN ISO 14583 - Black Zinc Coated
17	020201-003	Safety Washer ø4.1 Schnorr BN 791 Black Zinc Coated
18	VTB00C	Screw TBCE M4x12 UNI EN ISO 14583 - Black Zinc Coated
19	VTB00O-001	Screw TBCE M5x08 UNI EN ISO 14583 - Black Zinc Coated
20	699175	PAN-TILT Electronic Board CP101
21	SCH02P	Power Distribution Electronic Board
22	ROP005	Washer ø4.3 UNI 6592 - Black Zinc Coated
23	VTC00M	Screw TCCE M4x08 UNI EN ISO 14579 - Black Zinc Coated
24	VTC01E	Screw TCCE M3x08 UNI EN ISO 14579 - White Zinc Coated
25	020201-002	Safety Washer ø3.2 Schnorr BN 791 Black Zinc Coated
26	020210-005	Washer ø3.2 UNI 6592 - White Zinc Coated

SCENIUS UNICO

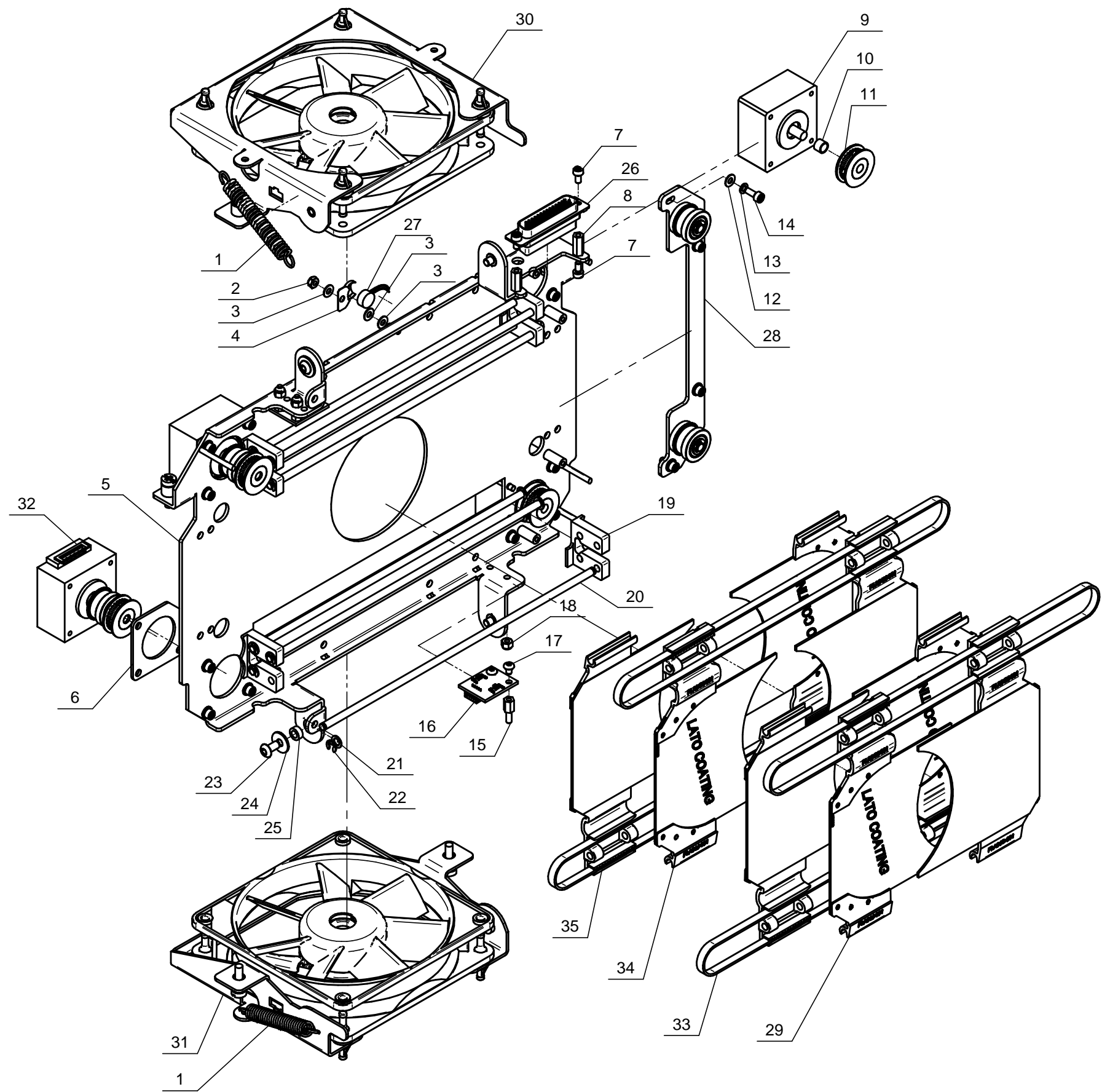
Head Lamp Reflector Assembly



N.	Part Number	Description
1	020106-004	Medium Nut M5 UNI 5588 - White Zinc Coated
2	020201-009	Safety Washer ø5.1 Schnorr BN 791 Black Zinc Coated
3	030374	Thermostat - R28 140 C° Series
4	VTC00T	Screw TCCE M4x25 UNI EN ISO 14579 - Black Zinc Coated
5	020201-003	Safety Washer ø4.1 Schnorr BN 791 Black Zinc Coated
6	ROP005	Washer ø4.3 UNI 6592 - Black Zinc Coated
7	322309-801	Mirror Group
8	285310-801	IR Filter Group
9	283099-001	Fixing Plate
10	031956	Single Shaft Motor 42 x 42 L=24
11	PER02H-001	Stud
12	VTB002	Screw TBCE M3x08 UNI EN ISO 14583 - Black Zinc Coated
13	BOC022-001	Bush
14	283056-001	Beam Size Reducer
15	VTB00D-001	Screw TBCE M4x08 UNI EN ISO 14583 - Black Zinc Coated
16	RIC002	Receptacle 715R02-3BP
17	299111-002	Mylar Protection for Derivation Board
18	020210-020	Washer ø3.2 UNI 6592 - Black Zinc Coated
19	020201-002	Safety Washer ø3.2 Schnorr BN 791 Black Zinc Coated
20	VTC009	Screw TCCE M3x06 UNI EN ISO 14579 - Black Zinc Coated
21	298112-002	Mylar Protection for 8 Driver Mini Board
22	309011-801	8 Drivers Board Group
23	VTC00M	Screw TCCE M4x08 UNI EN ISO 14579 - Black Zinc Coated
24	283028-001	Insulating Mylar
25	VTC00N	Screw TCCE M4x10 UNI EN ISO 14579 - Black Zinc Coated
26	232020-001	Fixing Plate
27	283099-002	Fixing Plate
28	LAM00I-001	OSRAM Lok-it!® 1400/PS Brilliant [C.I.] Lamp
29	322076-801	Effects Frame SCENIUS UNICO
30	020445-001	Receptacle Soutcho D8-334-200-190
31	322317-803	Lamp-holder Plate Group
32	283120-802	Lamp-Holder Support Group SCENIUS UNICO
33	286320-802	Fan Support Group
34	322088-801	Counterweight Group
35	322089-801	Counterweight Group
36	322090-801	Counterweight Group
37	322010-801	Electronics Support Group SCENIUS UNICO
38	322304-801	Dimmer Blade Group
39	322304-802	Dimmer Blade Group
40	283077-801	Ignitor Plate Group
41	SCH01R	BUS and Power Derivation Electronic Board
42	322015-801	Front Lens Group
43	FUN002-801	Transmission Rope

SCENIUS UNICO

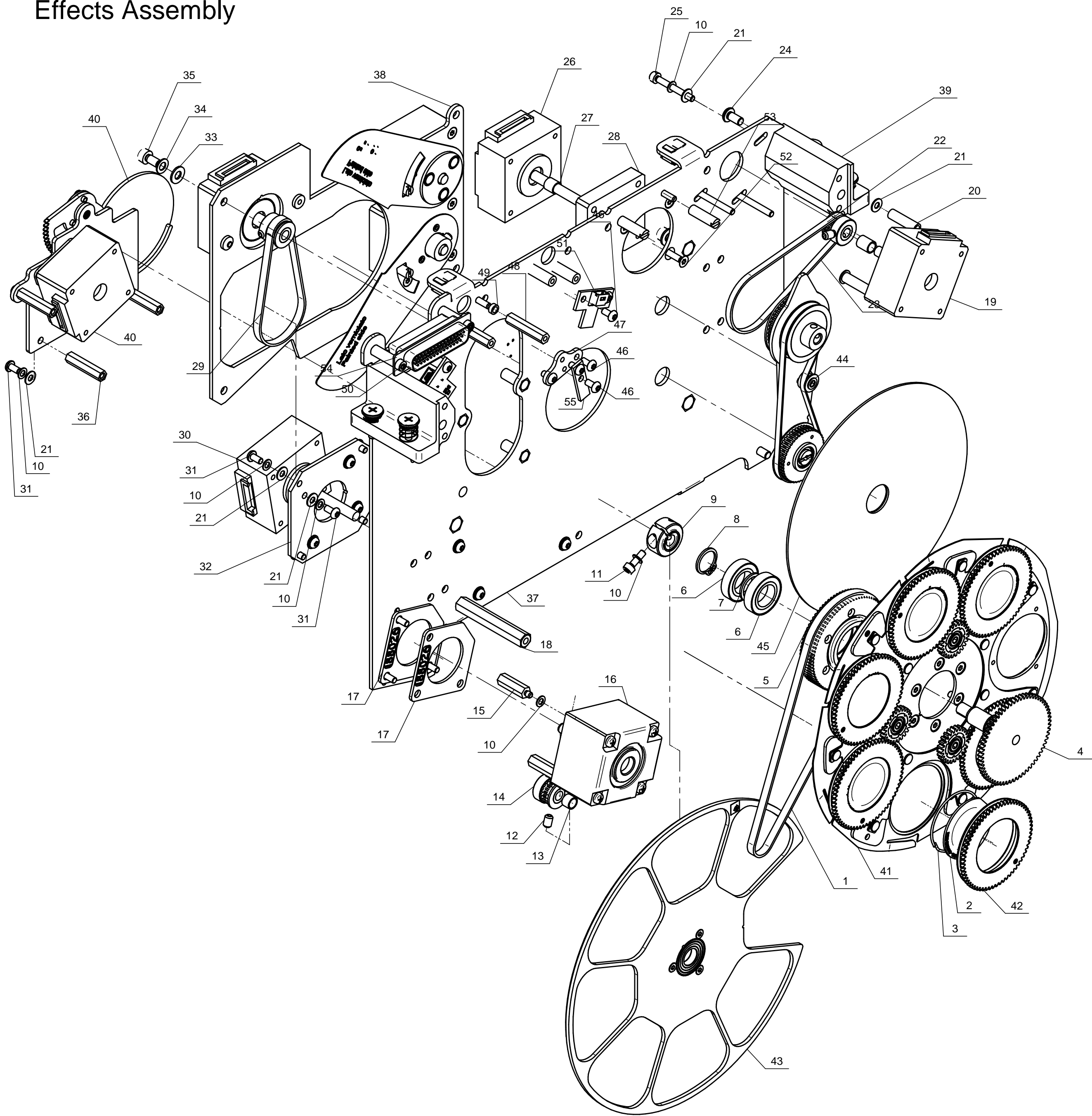
Colour Mixing Assembly



N.	Part Number	Description
1	081471-001	Extension Spring
2	020112-001	Self Locking Nut M3 UNI 7474 - White Zinc Coated - Metal Insert
3	020210-005	Washer ø3.2 UNI 6592 - White Zinc Coated
4	030377	Cut Out Thermal F11 Clamp MicroTherm B224
5	286047-801	Evenescence Plate SCENIUS
6	188026-001	Motor Insulating
7	VTC009-001	Screw TCCE M3x06 UNI EN ISO 14579 - Black Zinc Coated
8	021602-001	Hexagonal Spacer FF M3 H=12 - Nickel-Plated Brass
9	MOP01T	Single Shaft Motor 39 x 39 L=9.6
10	086026-005	Cylindrical Spacer Ø6.3 ø5.1 h4.5
11	PUD01E-801	Toothed Pulley Z28 MXL
12	020210-020	Washer ø3.2 UNI 6592 - Black Zinc Coated
13	020201-002	Safety Washer ø3.2 Schnorr BN 791 Black Zinc Coated
14	VTC00A	Screw TCCE M3x08 UNI EN ISO 14579 - Black Zinc Coated
15	021603	Hexagonal Spacer MF M3 H=7 - Nickel-Plated Brass
16	SCH030	Sensore Hall Electronic Board
17	VTB004	Screw TBCE M3x04 UNI EN ISO 14583 - Black Zinc Coated
18	020101-001	Self Locking Nut M3 UNI 7473 - White Zinc Coated - Nylon Insert
19	286049-001	CMY Stud Support
20	PER02C-001	Stud Ø4
21	RON002	Plastic washer ø4.3xØ7x0.5
22	020601-001	Circlips for Shaft C72 - UNI 7434 Brurnished 3.2 (albero ø4)
23	VTB00D	Screw TBCE M4x08 UNI EN ISO 14583 - Black Zinc Coated
24	020212-006	Washer ø4.3xØ12x1 UNI 6593 - White Zinc Coated
25	080630-001	Cylindrical spacer D7 d4.2 h=3
26	CAB05E-801	Motor Wiring CMY SCENIUS
27	650080-002	CUT-OUT Wiring F11 U185 K 110° whith Connector
28	286047-802	Support Group
29	322470-801	Cyan CMY Group SCENIUS UNICO
30	286051-803	Input Fan Group
31	286051-804	Output Fan Group
32	286050-801	motor Group
33	322470-802	Magenta CMY Group SCENIUS UNICO
34	322470-803	Yellow CMY Group SCENIUS UNICO
35	322470-804	CTO CMY Group SCENIUS UNICO

SCENIUS UNICO

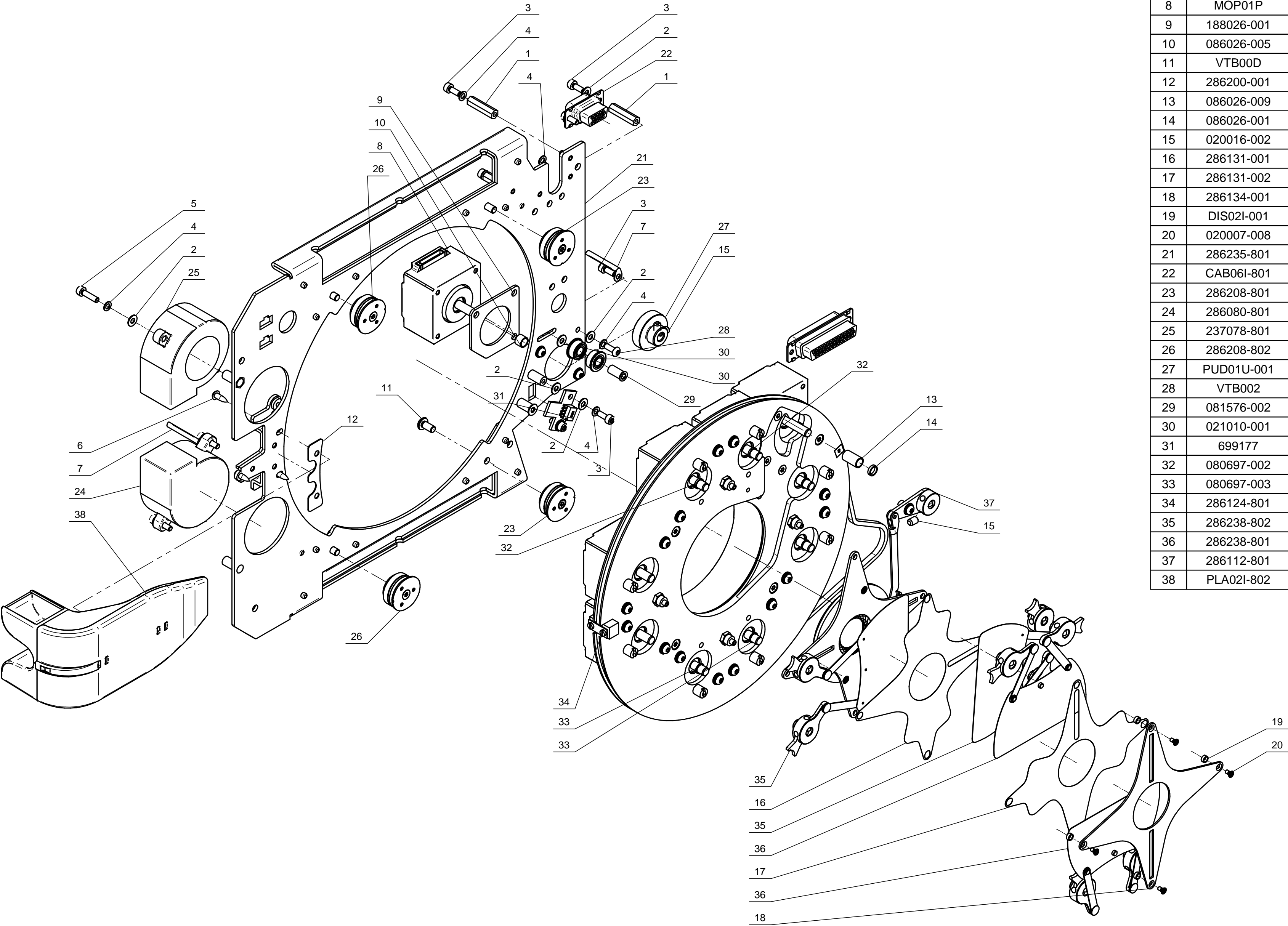
Effects Assembly



N.	Part Number	Description
1	021761-001	Toothed Belt MXL 1280 019 (Z160 Sviluppo 325.12) HSN-N40
2	GOD00E-005	Dichroic Gobo ø32.8 - Img ø23 (Oak Three)
3	MOL00A-001	Spring GOBOS
4	ING035-001	Gear Z63 m 0.75
5	PUD01D-801	Toothed Pulley 80 MXL
6	021006	Ball Bearing ø12xØ21x5 - 6801-ZZ
7	080643-002	Cylindrical Spacer Ø15 ø12 H=1
8	020602-003	Retaining Rings for Shaft C72 - UNI 7435 Brurnished Ø12
9	BOC02F-001	Bush
10	020201-002	Safety Washer ø3.2 Schnorr BN 791 Black Zinc Coated
11	VTC006	Screw TCCE M3x10 UNI EN ISO 14579 - Black Zinc Coated
12	020016-002	Grub Screw PP UNI 5923 M4x06 Black Zinc Coated
13	086026-005	Cylindrical Spacer Ø6.3 ø5.1 h4.5
14	PUD01A-801	Toothed Pulley Z20 MXL
15	DIS028-001	Hexagonal Spacer MF M3 H=17 - Nickel-Plated Brass
16	MOP017	Single Shaft Motor 39 x 39 L=16.5
17	188026-001	Motor Insulating
18	DIS030-001	Hexagonal Spacer FF M4 CH=7 H=45.5
19	MOP01U	Single Shaft Motor 39 x 39 L=16.5
20	080601-014	Cylindrical Spacer Ø 5 ø 3.2 H=18
21	020210-020	Washer ø3.2 UNI 6592 - Black Zinc Coated
22	PUD00B-801	Toothed Pulley Z20 MXL 012
23	021772-001	Toothed Belt 0760 MXL 012 (Z95 Sviluppo 193.04) HSN-40N
24	VTB00D-001	Screw TBCE M4x08 UNI EN ISO 14583 - Black Zinc Coated
25	VTC00F	Screw TCCE M3x25 UNI EN ISO 14579 - Black Zinc Coated
26	MOP022	Single Shaft Motor 39 x 39 L=35
27	086026-013	Cylindrical Spacer Ø6.3 ø5.1 h6
28	286052-002	Spacer Plate
29	CID006-001	Toothed Belt 0680 MXL 012 (Z85 Sviluppo 172.72) HSN-40N
30	MOP023	Single Shaft Motor 39 x 39 L=40
31	VTB005	Screw TBCE M3x06 UNI EN ISO 14583 - Black Zinc Coated
32	286151-004	Motor Plate
33	ROP005	Washer ø4.3 UNI 6592 - Black Zinc Coated
34	020201-003	Safety Washer ø4.1 Schnorr BN 791 Black Zinc Coated
35	VTC00M	Screw TCCE M4x08 UNI EN ISO 14579 - Black Zinc Coated
36	080692-005	Hexagonal Spacer FF M3 CH=5 H=23.2
37	322151-801	Effects Motors Plate
38	322044-802	Motors Plate Group
39	285140-801	Supporting block effects plate
40	322007-801	Frost Blade Group
41	285280-801	Gobo Wheel
42	ING027-801	Bearing Group Z63 m 0.75
43	286087-802	Colors Disc Group 7 + 1
44	322013-802	Animation Disc Group
45	322211-801	Animation Disc Group
46	VTB005-001	Screw TBCE M3x06 UNI EN ISO 14583 - Black Zinc Coated
47	286148-001	Sensor Support Plate
48	021602-013	Hexagonal Spacer FF M3 H=25 - Nickel-Plated Brass
49	080601-008	Cylindrical Spacer Ø5 ø3.2 H=2
50	VTC009-001	Screw TCCE M3x06 UNI EN ISO 14579 - Black Zinc Coated
51	699177	Sensore Hall Electronic Board CP0130
52	VTS01C	Screw TSCE M3x12 UNI EN ISO 14584 - Black Zinc Coated
53	081004-001	Cylindrical End Stopper ø5 M3 H17
54	CAB07G-801	Motor Wiring Color-Gobo Wheel SCENIUS UNICO
55	SCH02J	Sensore Hall Electronic Board

SCENIUS UNICO

Iris/Profiler Assembly



N.	Part Number	Description
1	021602-002	Hexagonal Spacer FF M3 H=20 - Nickel-Plated Brass
2	020210-020	Washer ø3.2 UNI 6592 - Black Zinc Coated
3	VTC00A	Screw TCCE M3x08 UNI EN ISO 14579 - Black Zinc Coated
4	020201-002	Safety Washer ø3.2 Schnorr BN 791 Black Zinc Coated
5	VTC00B	Screw TCCE M3x12 UNI EN ISO 14579 - Black Zinc Coated
6	020031-016	Screw AfTBIC Ø2.9x9.5 ISO 7049 - Black Zinc Coated
7	031289	Cable Clamp Ø3.3 PVC Black
8	MOP01P	Single Shaft Motor 39 x 39 L=20
9	188026-001	Motor Insulating
10	086026-005	Cylindrical Spacer Ø6.3 ø5.1 h4.5
11	VTB00D	Screw TBCE M4x08 UNI EN ISO 14583 - Black Zinc Coated
12	286200-001	Air-Duct Support Plate
13	086026-009	Cylindrical Spacer Ø6.3 ø5.1 h11
14	086026-001	Cylindrical Spacer Ø6.3 ø5.1 h1.5
15	020016-002	Grub Screw PP UNI 5923 M4x06 Black Zinc Coated
16	286131-001	Intermediate Plate
17	286131-002	Intermediate Plate
18	286134-001	Closure Plate
19	DIS02I-001	Spacer
20	020007-008	Screw TSPIC M2x04 UNI 7688 - White Zinc Coated
21	286235-801	Motor Plate
22	CAB06I-801	Profile Motor Wiring
23	286208-801	Concentric Pin Group
24	286080-801	Fan Group With Connector
25	237078-801	Fan Group With Connector
26	286208-802	Eccentric Pin Group
27	PUD01U-001	Toothed Pulley Z25 HTD 3M
28	VTB002	Screw TBCE M3x08 UNI EN ISO 14583 - Black Zinc Coated
29	081576-002	Bush D5 M3 H10
30	021010-001	Flanged Ball Bearing ø5xØ11x5 ø12.5 - FLW685ZZA
31	699177	Sensore Hall Electronic Board CP0130
32	080697-002	Cylindrical Spacer Ø6.3 ø5.1 H=1
33	080697-003	Cylindrical Spacer Ø6.3 ø5.1 H=0.5
34	286124-801	Profile Motor Plate Group
35	286238-802	Blade Group
36	286238-801	Blade Group
37	286112-801	Iris Group
38	PLA02I-802	Effects Air-Duct

Optical Assembly

